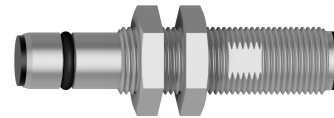


PPI 129 214

Higher Pressure Resistant Inductive Proximity Switches

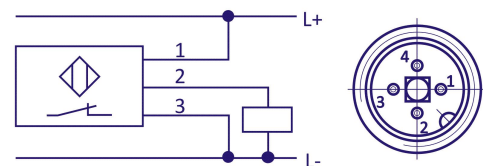
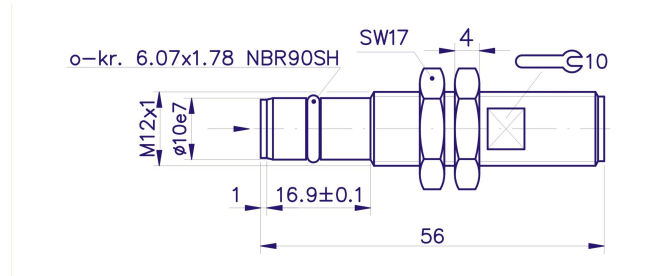
Product image



Technical parameters

Nominal Sensing Distance Sn 1,2 mm	Effective Sensing Distance Sr 0,9 - 1,5 mm
Housing Dimensions M12	Mounting Flush
Hysteresis (0,1 -0,15) x Sn	Nominal Voltage Un 24 VDC
Supply Voltage Uc 10 - 30 VDC	Supply Current Ic < 10 mA
Output Current Iz ≤ 200 mA	Switching Frequency 1 kHz
Short-Circuit Protection Yes	Polarity Reversal Protection Yes
Pressure Resistance < 5 MPa	Output Type PNP nc
Housing Material Stainless Steel AISI 303	Ambient Temperature Range T -25°C...+80°C
Output Type Connector M12	Protection Standard IP 67

Dimensions



Company Head Office Telephone

PLOSKON AT s.r.o.
Jesenná 1
080 01 Prešov
Slovak Republic

+421 / (0)51 7732 836
+421 / (0)51 7731 003

E-mail

obchod@ploskon.sk

Website

www.ploskon.sk

Billing information

PLOSKON AT s.r.o.
IČO:36483354
DIČ:2020009860